

EMG

**BACKGROUND
INFORMATION
DOCUMENT**

**UPGRADING OF AN
EXISTING STORMWATER
CROSSING AS PART OF
THE UPGRADING ON THE
ACCESS ROAD BETWEEN
KOKFONTEIN AND
ELLEDALE, NORTHERN
CAPE PROVINCE.**

**Joe Morolong Local
Municipality**

**Environmental
Management Group
(PTY) Ltd**

Compiled by:
Doret du Toit
Public Participation Practitioner

Background Information Document for the proposed upgrading of an existing stormwater crossing as part of the upgrading on the access road between Kokfontein and Ellendale, Northern Cape Province.

16 May 2024

1. INTRODUCTION

Environmental Management Group (Pty) Ltd is the Professional Service Provider applying for Environmental Authorisation through a Basic Assessment process on behalf of Joe Morolong Local Municipality for the proposed upgrading of an existing stormwater crossings part of the upgrading on the access road between Kokfontein and Ellendale, Northern Cape Province.

2. LOCALITY

The proposed upgrading of the stormwater culvert bridge crossing the Manyeding River is located in the quaternary catchment D41L in the Northern Cape, between Kokfontein and Ellendale villages.

The development starts at the entrance of Ellendale Village from the direction of Kuruman and moves straight through the heart of the village before linking with Kokfontein Village 4 km further.

..

PURPOSE OF THIS DOCUMENT

EMG has prepared this document to inform you about:

- 📌 The proposed project.
- 📌 The current understanding of the baseline environmental and social conditions.
- 📌 Possible environmental impacts and proposed specialist studies
- 📌 How you can have input into the Environmental Authorisation and Processes.

YOUR ROLE

You have been identified as an Interested and/or Affected Party (I&AP) who may want to be informed about the proposed upgrading development and have input into the processes and environmental reports. You have an opportunity to review this document and provide your initial comments to us for incorporation in the process.

Comments will be recorded and included in the reports submitted to the relevant authorities for decision-making.

HOW TO RESPOND

If you are interested in receiving further information on the project, please register your details with the person listed below. Responses to this document can be submitted by means of the **attached comments sheet** and/or through communication with the persons listed below.

Doret du Toit

Tel: 051 412 6350

E-mail: accounts@envmgp.com / dawid@envmgp.com / jessica@envmgp.com

Environmental Authorisation

Prior to the commencement of the proposed stormwater crossing and access road development, Environmental Authorisation in terms of the National Environmental Management Act (NEMA), (Act No. 107 of 1998), Basic Assessment (BAR) Regulations as amended 7 April 2017 is required from the competent authority, the Department Agriculture, Environmental Affairs, Rural Development and Land Reform (DAEARDLR)

According to the National Environmental Management Act (Act No. 107 of 1998) as amended 7 April 2017, Listing Notice 1 - R327 – the following activity(s) are applicable to this proposed project:

Listing Notice 1 (GNR. 327, 07 APRIL 2017)

Activity 19 - The infilling or depositing of any material of more than 10 cubic metres into, or the dredging, excavation, removal or moving of soil, sand, shells, shell grit, pebbles or rock of more than 10 cubic metres from

- (i) a watercourse;

Listing Notice 3 (GNR. 324, 07 APRIL 2017)

Activity 14 - The development of –

- (ii) infrastructure or structures with a physical footprint of 10 square metres or more;
Where such development occurs –
 - (a) Within a watercourse
 - (g) Northern Cape
- (ii) Outside urban areas;
- (ff) Critical biodiversity areas or ecosystem service areas as identified in systematic biodiversity plans adopted by the competent authority or in bioregional plans

NWA: Section 21 (ACT NO.34 of 1998), as amended

Activity 21 c - impeding or diverting the flow of water in a watercourse

Activity 21 i - altering the bed, banks, course, or characteristics of a watercourse

3. Project Description

The proposed development starts at the entrance of Ellendale Village from the direction of Kuruman and moves straight through the heart of the village before linking with Kokfontein Village 4 km further.

The proposed upgrading of the existing gravel road to an interlocking concrete block paved road is approximately 5,050 metres long. Environmental Authorisation will be required for the construction/upgrading of a culvert bridge crossing over the Manyeding River, which triggers listed activities in NEMA.

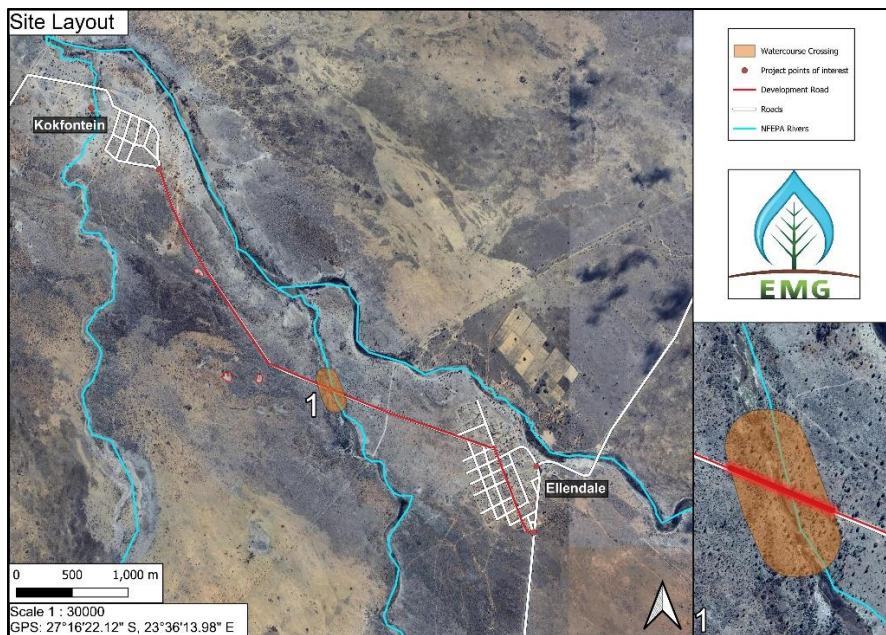


Figure 1 Proposed Layout Map

PARTIES INVOLVED IN THE APPLICATION PROCESSES

IAPs

- ♣ Surrounding landowners, land users and communities
- ♣ Parastatals

KEY STAKEHOLDERS

- ♣ Department of Small Business Development, Tourism and Environmental Affairs
- ♣ Department: Agriculture, Land Reform and Rural Development
- ♣ Department of Water and Sanitation (DWS)
- ♣ Department of Health
- ♣ Department of Heritage (SAHRA)

LOCAL AUTHORITIES








- ♣ Joe Moroling Local Municipality - Municipal Manager
- ♣ Joe Morolong Local Municipality - Executive Mayor
- ♣ Jhon Taolo Gaetsewe District Municipality – Municipal Manager
- ♣ Jhon Taolo Gaetsewe District Municipality - Executive Mayor

Please let us know if there are any additional parties that should be involved.

4. Public participation

The Public Participation Process (PPP) forms a fundamental part of the application for Environmental Authorisation process. It aims to provide an opportunity for Interested and Affected Parties (I&AP's) to obtain clear, accurate and comprehensive information about the Basic Assessment Report application for the proposed upgrading of an existing stormwater crossing as part of the upgrading on the access road between Kokfontein and Ellendale, Northern Cape Province.

In addition, inputs from the public, interested and affected groups are considered in the planned project development. As a result, a clear recording of issues raised, and comments made is maintained in a register of comments and responses. This register is updated as and when new comments and concerns are raised.

-  Public meeting with I&APs and regulatory authorities (if required).
-  Submit application to the DAEARDLR (14 days).
-  Submit draft BAR to the DAEARDLR.
-  Public & authority review of draft BAR (30 calendar days) Update the draft BAR with comments received during the review period.
-  Submit updated Final BAR to the DAEARDLR.
-  Review of the Final BAR by the DAEARDLR (107 calendar days).
-  Circulate decision to I&APs on the project database.

PROCESS STEPS (in accordance with GN326)	RESPONSIBLE PARTY	TIMEFRAME
1. Initial communication to clarify the application with the Authorising Department.	EAP	1 day
2. EAP to conduct a site investigation	EAP	1 day
3. EAP to submit Application for Environmental Authorisation to the competent authority.		1 day
4. Competent authority Accepts Application.	Competent authority	14 day
5. EAP to compile a Basic Assessment Report subjected to 30 days Public Participation Process.	EAP	90 day
6. EAP to submit Final Basic Assessment Report inclusive of comments to competent authority.	EAP	1 day
7. Competent authority to grant or decline Approval for Environmental Authorisation.	Competent authority	107 day
8. Environmental Authorisation subject to 20-day appeal process.	EAP	20 day
9. Final Approval of Environmental Authorisation.	Competent authority	1 day

Potential Environmental impacts

Below is a preliminary list of potential impacts identified at this process stage and will be investigated as part of the environmental assessment process. The list will be refined during the Basic Assessment Process.



Phase One Heritage Impact Assessment



Terrestrial Ecological Assessment and Wetland Delineation

Maps

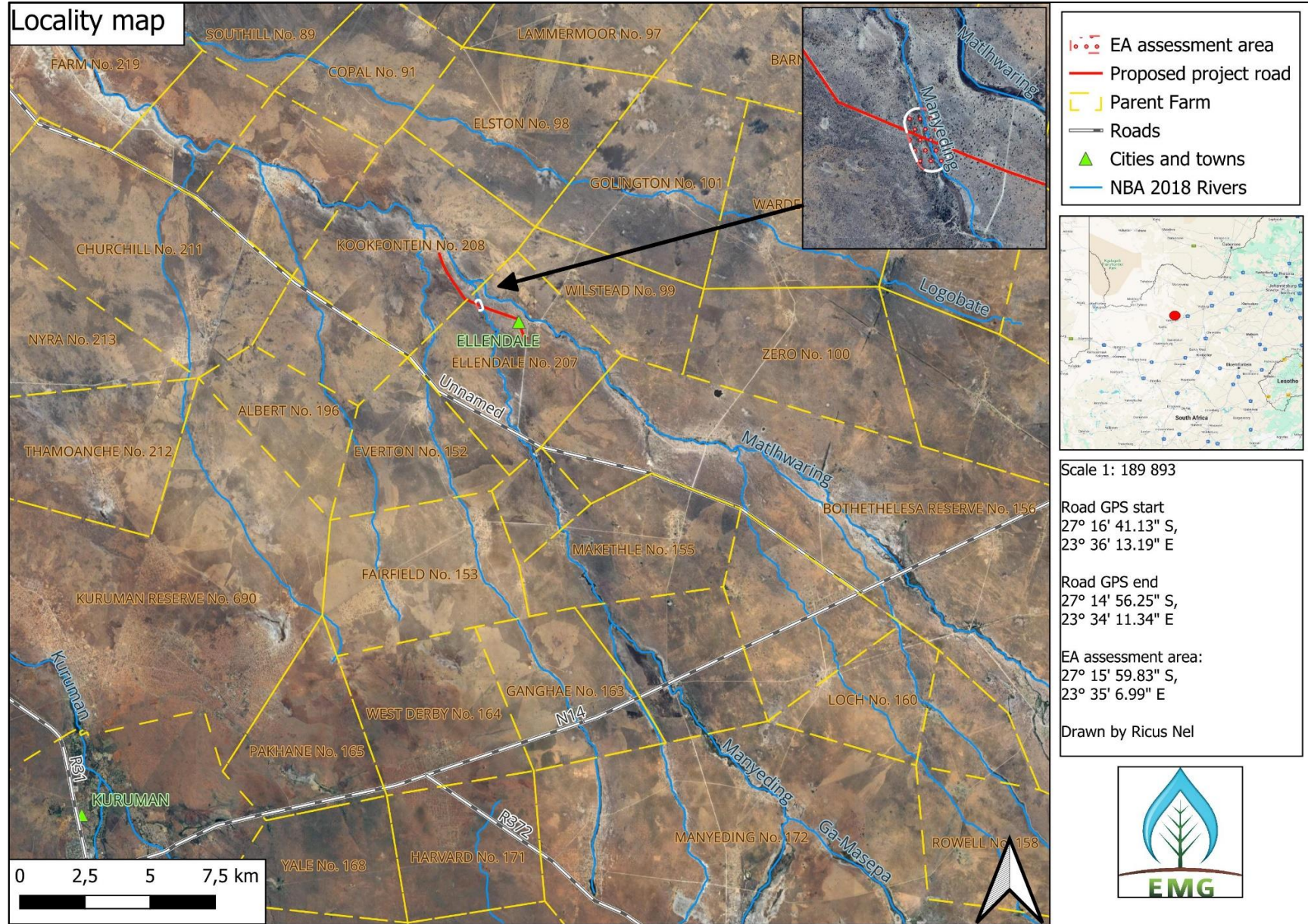


Figure 2 Locality map of proposed culvert bridge and access road upgrade between Kokfontein and Ellendale.

